



NEW

WELDTRACX S1 WELDING TRACTOR



**YARIMKÜRE İNŞAAT MÜMESSİLLİK
TURİZM İTHALAT İHRACAT SANAYİ VE
TİCARET LİMİTED ŞİRKETİ
TÜRKİYE
ISO 9001:2008 CERTIFICATE No. 55929**

WELTRAXX PIPELINE WELDING TRACTORS

Weldtracx pipeline welding tractors are built on Landini or any other brand of 4x4 agricultural tractors. This brochure provides information on Weltracx Model WX-L-2W-1.3T Welding Tractor based on Italian Landini 100 PowerFarm tractor. It is basically equipped with 1.3 ton crane, an alternator and 2 Miller XMT 350 or Lincoln V350-PRO welding inverters.



1. Chassis: Landini 100 PowerFarm Tractor

Engine Specification:

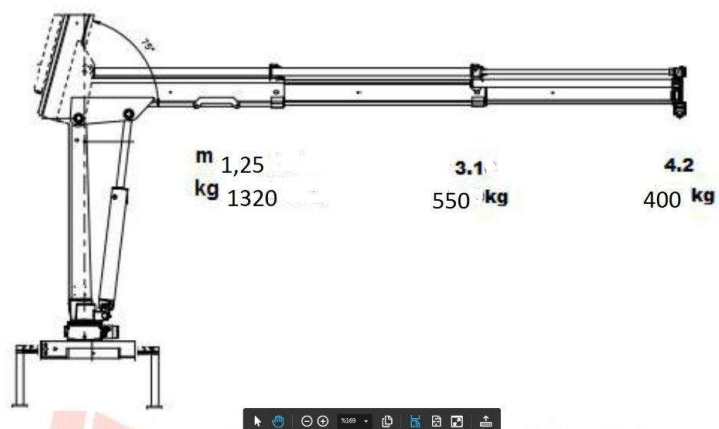
Perkins Tier 3 direct-injection engine	1104D-44TA
max. power (ISO), hp/kW	92,5/68
net PTO power (ISO), hp/kW	79/58*
max. torque, lb. (Nm)	268 (363)
displacement, cu. in. (cm ³)	268,5 (4400)
nr. of cylinders	4 turbo aftercooler
fuel tank capacity, gal. (lt)	27.2 (102)

Dimensions and Weight:

Front tyres	9.5R48	9.5R48
Rear tyres	9.5R48	9.5R48
A length (with ballast), in. (mm)	4127	4127
B min. width, in. (mm)	1670	1670
C wheelbase 2WD/4WD, in. (mm)	2255/2230	2255/2230
D height over cab, in. (mm)	2730	2730
E ground clearance 4WD, in. (mm)	684	684
Weight 4WD (w/o ballast) + 150kg cab	3460 kg	3460 kg



2. Crane: KHS series crane





3. Alternator

The system is basically a three phase complete with a solid-state regulator. The synchronous alternator is brushless in three phase; at 1500 rpm (50-60 Hz) four poles. It is connected to PTO of the tractor.

Alternator Specification:

Model: GSA 282L / T4

- Type: 4 pole, rotating field
- Exciter Type: Brushless
- Bearing: double
- Voltage Regulator: solid state
- Squirrel Cage Motor
- Min. shaft speed: 1500 rpm
- Rating: 40 kVA (continuous) - 44 kVA (standby)
- Voltage. 400V 57A 50Hz
- Voltage Regulation: no load to full load: 3-phase, sensing: +/-2%
- One step load acceptance: 100% of rating
- Drive Power: 50 HP
- Enclosure: IP23
- Insulation: Class H
- Temperature Rise: 125°C
- Weight: 200kg
- Standard: IEC 60034-1

4. Welding Package

Weltracx is equipped with 2 Miller XMT 350 CC / CV or Lincoln V350-PRO inverters.

Input Power:	230 - 460 VAC
Rated Output:	350 A, 60% Duty Cycle
Max Open Circuit Voltage:	75 VDC
Voltage Range (CV mode):	10 - 38 VDC
Amperage Range (CC mode):	5 - 425 A
Dimensions:	432 x 318 x 610 mm
Weight:	36.3 kg



İrtibat / Contact: YARIMKÜRE İNŞAAT MÜMESSİLLİK TURİZM İTHALAT İHRACAT SANAYİ VE TİCARET LİMİTED ŞİRKETİ
Mutlukent Mahallesi, Ankara 85 Sitesi, 2020. Sokak No.21, Beysukent, Çankaya, Ankara, Türkiye
Tel: +90-312-2363217 Fax: +90-312-2360276 Email: ayhan@hempipe.com